

# 5VS

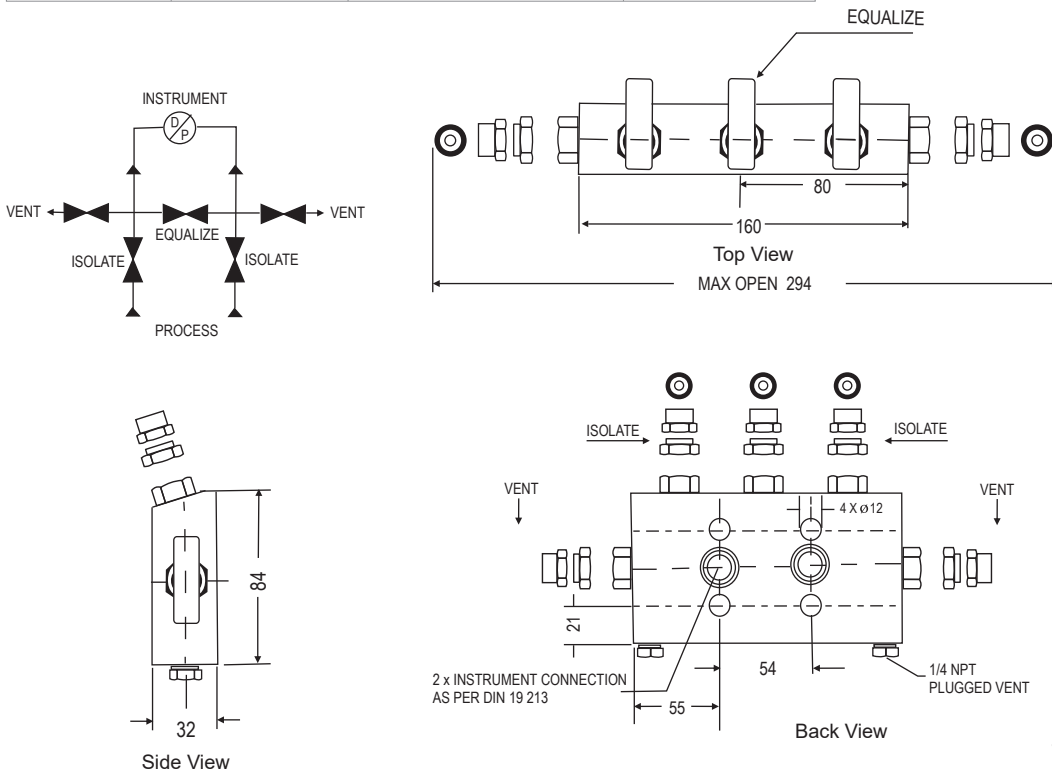
Direct mount (pipe to flange)



With threaded horizontal port inlets and Flange outlets. Two vent/test connections are positioned on the bottom of the body. The isolating and equalizing bonnets are angular positioned on the top side. The venting bonnets are positioned on the left & right hand side. Designed for direct mounting.

### Standard Connection

| Product | Process side    | Instrument side | Vent/Test       |
|---------|-----------------|-----------------|-----------------|
| 5VS     | 1/2" NPT female | Flange          | 1/4" NPT Female |



Notes : • Drawings are not to scale.  
• All Dimensions are in mm.

**Specifications - Standard Version**

|                             |   |
|-----------------------------|---|
| Body                        | : SS 316                                  |
| Stem                        | : SS 316                                  |
| Valve assembly              | : SS 316                                  |
| 'T' bar handle              | : SS 304                                  |
| Maximum working pressure    | : 6000 PSI                                |
| Maximum working temperature | : 240°C                                   |
| Packing                     | : PTFE                                    |
| Type of stem                | : Type CT; Stem with conical metal tip    |
| Drain port                  | : 1/4" NPT [F]; provided with SS 316 plug |
| Bracket Mounting Holes      | : 4 Nos. with 12 mm ID                    |

**How To Order**

| Body Material              | Stem Type | Stem Packing   | Size = Inlet x Outlet | Connections                 | Threads                       |
|----------------------------|-----------|----------------|-----------------------|-----------------------------|-------------------------------|
| C = Carbon Steel           | CT (Std)  | P = PTFE (Std) | 2F = 1/4" x Flange    | FD = Female x Flange (54mm) | N = NPT (ANSI B 1.20.1)       |
| S = SS 316 (Std)           | DS        | G = Grafoil    | 4F= 1/2" x Flange     | SW = Socket Weld            | P = BSPP (BS 2779, ISO 228/1) |
| S4 = SS 304                |           |                |                       |                             | B = BSPT (BS 21, ISO 7/1)     |
| SL = SS 316L               |           |                |                       |                             |                               |
| M4 = Monel 400             |           |                |                       |                             |                               |
| M5 = Monel 500             |           |                |                       |                             |                               |
| H = Hastelloy C            |           |                |                       |                             |                               |
| S6 = SS 316/SS 316L (Dual) |           |                |                       |                             |                               |
| SD = SDSS (Super Duplex)   |           |                |                       |                             |                               |
| I5 = Inconel 625           |           |                |                       |                             |                               |

**Options**

|            |   |
|------------|---|
| <b>TF</b>  | : Compliance to NACE standard   |
| <b>SG</b>  | : For Oxygen service, valves are supplied cleaned, degreased and suitably packed. |
| <b>GH</b>  | : Material test certificate*  |
| <b>GO</b>  | : Hydro test certificate  |
| <b>PRF</b> | : PTFE Ring For Flange Seal   |
| <b>GRF</b> | : Grafoil Ring For Flange Seal  |

\* Material test certificate will be provided for wetted parts only with chemical composition testing. for others, please consult factory.

**Example**

To place an order simply refer to the codes in the table.

Valve Type : Body Material + Stem Type + Stem Packing + Size + Connections + Threads + Options

5VS + S + CT + P + 4F + FD + N = 5VS . S . CT . P . 4F . FD . N . Options

Note :

- The weld prepared types are available with female plain end - suitable for socket weld.
- Anti-tamper bonnet - special design on request with locking arrangement if desired.

Note : Specifications and dimensions given in this product catalogue represents the state of engineering at the time of printing .  
Modifications may take place and materials specified may be replaced by others without prior notice.